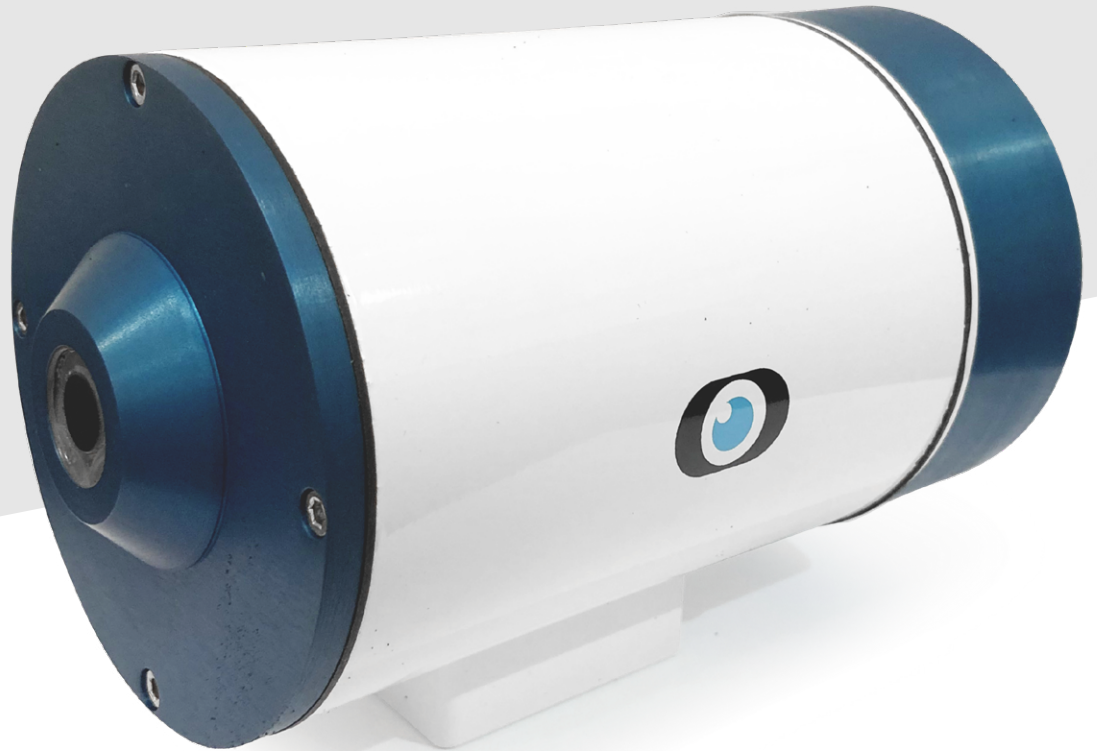


Acoustic trigger Unit



**Built in battery
power**

Compact size

**User selectable
sensitivity settings**

TTL trigger output

The Specialised Imaging SI-AT1 provides a reliable acoustic trigger for blast or shockwave detection.

Built in battery power within a compact, rugged enclosure allows the AT1 to be used outside in all weathers and independent of mains power for up to 8 hours.

FEATURES

- Small and rugged
- Battery powered for up to 8 hours
- User adjustable sensitivity
- Standard tripod mounting threads

SENSOR

Sensor	Piezoelectric acoustic sensor
--------	-------------------------------

INPUT / OUTPUT SIGNALS

Output	Positive 5V TTL (BNC socket connector) 50Ω termination
Pulse width	30mS
Trigger indicator	LED
Electrical input	Battery powered (Built in) Battery charger included
Low power indicator	LED

MECHANICAL

Dimension mm (w/d/h)	Unit 152mm x 88mm (5.9" x 3.46") Tripod mount block 16mm high (0.62")
Weight	1Kg (2.2lbs)
Tripod mount	1 x 1/4-20UNC 1 x 3/8-16UNC

ENVIRONMENTAL

Storage temperature	-20°C to +50°C
Operating temperature	-15°C to +50°C
Charging temperature	0°C to +40°C
Humidity	10—90% RH non condensing
Vibration shock	10—40 Hz Max. 10g in any direction
EMC	Meets all UKCA/EU harmonised standards

UK (Head Office / Factory)

6 Harvington Park,
Pitstone Green Business Park
Pitstone. LU7 9GX England

Tel **+44 (0) 1442 827728**

USA

Specialised Imaging Inc.
40935 County Center Dr. Suite D
Temecula, CA 92591, USA

Tel **+1 951-296-6406**

GERMANY

Hauptstr. 10,
82275 Emmering
Germany

Tel **+49 8141 666 89 50**



FM87429