

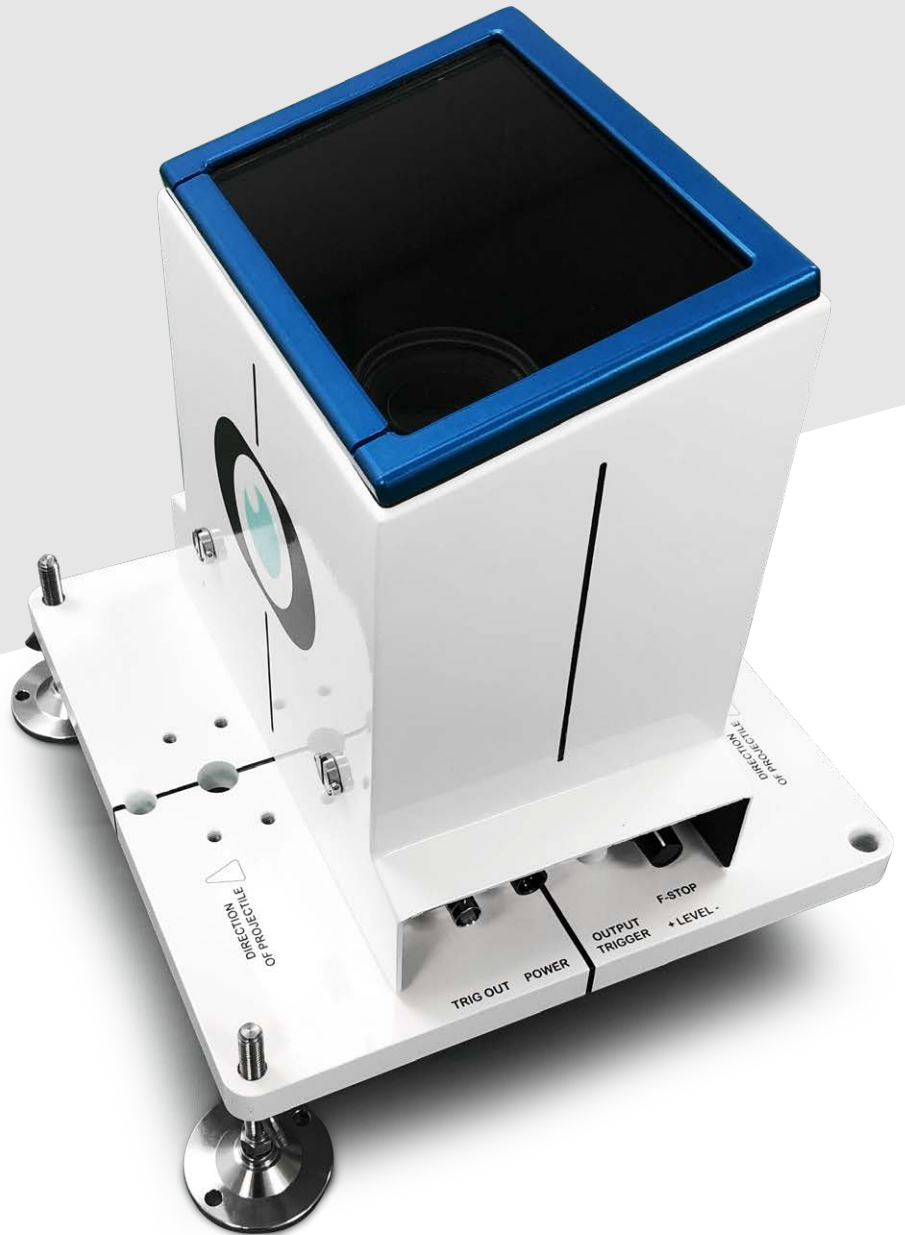
Optical Sky Screen Trigger Unit

Rugged Design

Battery Powered

Shadow Detector

High / Low pass filtering



The Specialised Imaging SST1 provides a reliable optical trigger for projectile "shadow" detection.

Battery powered, with a rugged enclosure allows the SST1 to be used outside in all weathers and independent of mains power.

Battery unit includes mains charger and can power the SST1 for up to 8 hours.

FEATURES

- Small and lightweight
- Battery powered for up to 8 hours
- Nikon lens mount fitting
- Local sensitivity adjustment
- Optional remote sensitivity adjustment



OPTICAL

Lenses	Nikon F-Mount
Alignment	Engraved Datum lines

SENSOR

Sensor	Multi-Segment Photodiode array. 300nm – 700nm range
--------	--

INPUT / OUTPUT SIGNALS

Output	Positive 5V TTL (BNC socket connector) 50Ω termination
Trigger indicator	LED
Electrical Power	DC: 18-34V DC Battery powered: Sealed lead acid Battery charger Included

MECHANICAL

Dimension mm (w/d/h)	Unit with Standard cover 28cm x 28cm x 29cm (11" x 11" x 11.5") Unit with Extended cover (Optional) 28cm x 28cm x 38cm (11" x 11" x 15")
----------------------	---

Weights	Standard unit 5.8Kg (12.7lbs) Extended cover unit (Optional) 6Kg (13.2lbs)
---------	---

ENVIRONMENTAL

Storage temperature	-10°C to +50°C
Operating temperature	-5°C to +40°C
Humidity	10—90% RH non condensing
Vibration shock	10—40 Hz Max. 10g in any direction
EMC	Meets all UKCA/EU harmonised standards

UK (Head Office / Factory)
6 Harvington Park,
Pitstone Green Business Park
Pitstone. LU7 9GX England
Tel +44 (0) 1442 827728

USA
Specialised Imaging Inc.
40935 County Center Dr. Suite D
Temecula, CA 92591, USA
Tel +1 951-296-6406

GERMANY
Hauptstr. 10,
82275 Emmering
Germany
Tel +49 8141 666 89 50

specialised-imaging.com info@specialised-imaging.com



FM 87429

